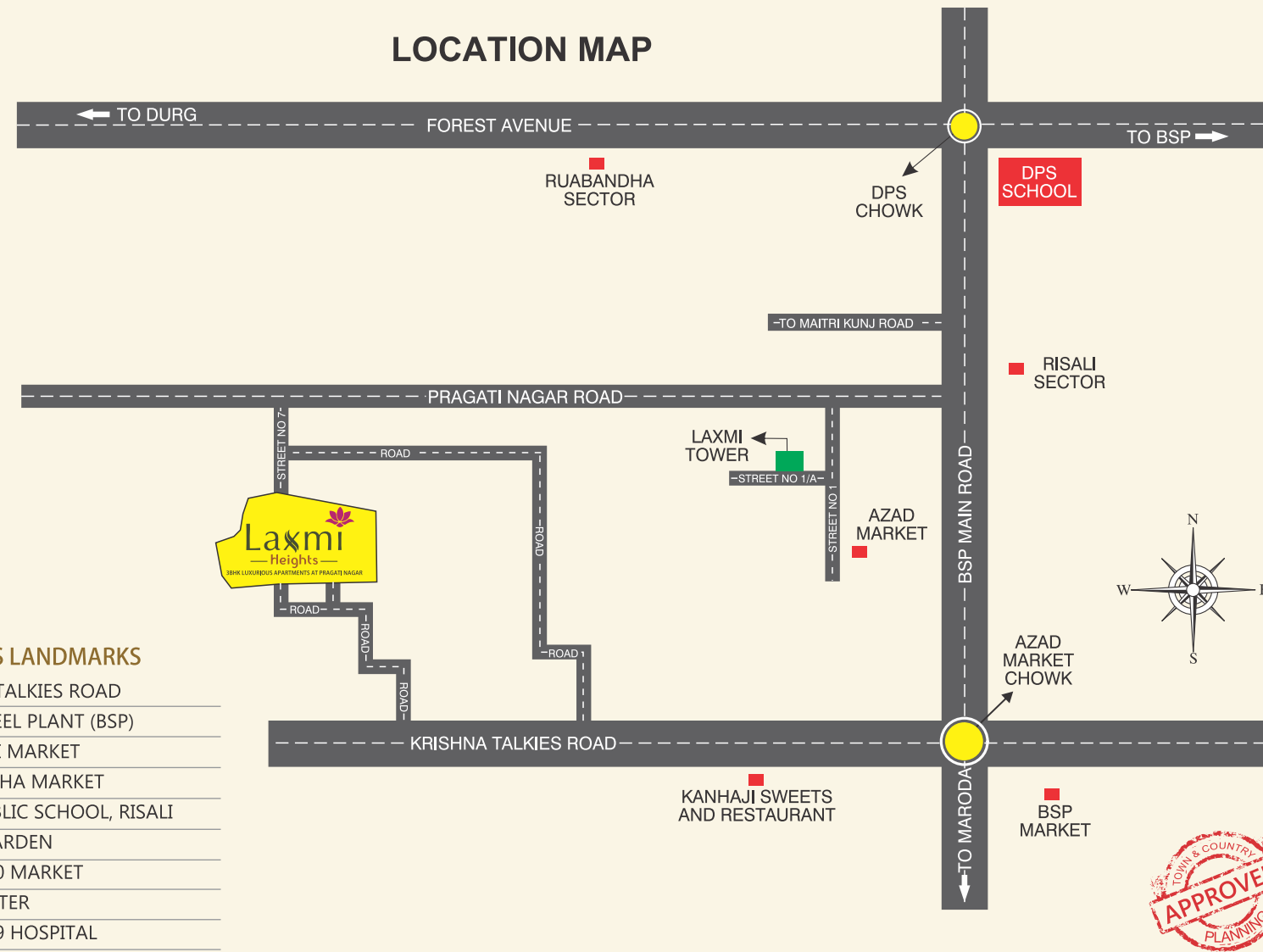


LOCATION MAP



DISTANCE FROM VARIOUS LANDMARKS

- ☑ 2 min drive from KRISHNA TALKIES ROAD
- ☑ 5 min drive from BHILAI STEEL PLANT (BSP)
- ☑ 5 min drive from BSP RISALI MARKET
- ☑ 5 min drive from RUABANDHA MARKET
- ☑ 5 min drive from DELHI PUBLIC SCHOOL, RISALI
- ☑ 5 min drive from MAITRI GARDEN
- ☑ 5 min drive from SECTOR 10 MARKET
- ☑ 5 min drive from CIVIC CENTER
- ☑ 10 min drive from SECTOR 9 HOSPITAL
- ☑ 15 min drive from DURG RAILWAY STATION



A Wonderful Life With
Many Wonders Of Modern Living...

RERA NO.-PCGRERA050122001311



Laxmi

— Heights —

3BHK LUXURIOUS APARTMENTS
AT PRAGATI NAGAR

"LAXMI GROUP" is a well known leading group of high repute in Real Estate Business in Chhattisgarh. Committed to quality, timely delivery and best possible customer service with personal touch up to the expectation of the customers, over more than 3 decade. The first FIRM of the Group came into existence in the year 1990 and today the Group have Six FIRMS under its wings. The Group is proud of making Dream Home come true for more than 5000 Families through development of more than 2500000 S.ft. of Land till now.



Laxmi
— Heights —
3BHK LUXURIOUS APARTMENTS
AT PRAGATI NAGAR

Happiness Transformed Into Home..

Laxmi Heights is all set to redefine the way of community living. It's an ideal residential campus possessing 3 BHK luxury apartments. Situated at the most sought after location - Street No.7, Pragati Nagar, Risali Bhlai, Laxmi Heights is your dream home for new luxurious beginning.





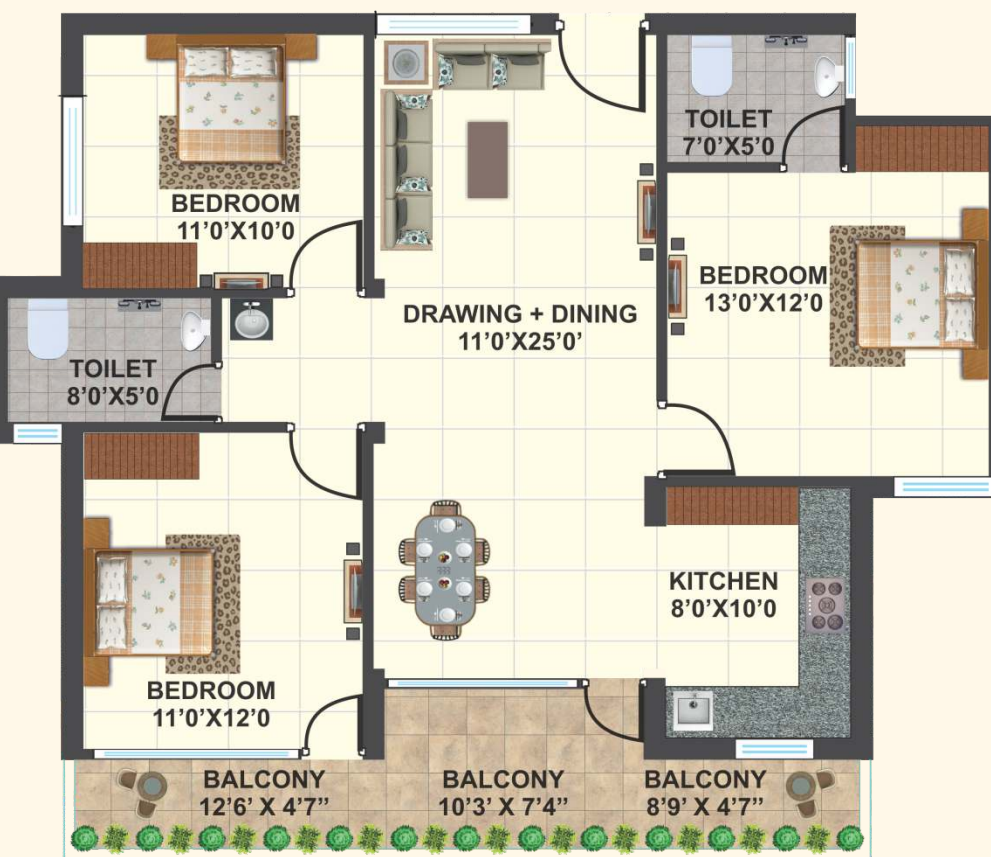
Laxmi Heights

3BHK LUXURIOUS APARTMENTS
AT PRAGATI NAGAR

The joy of living
elevated up to your expectations

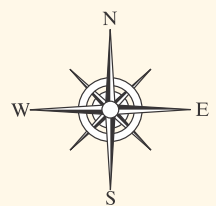


3D FLOOR PLAN

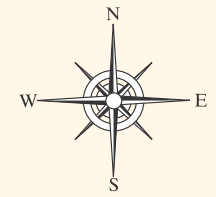


2D FLOOR PLAN

3BHK FLOOR PLAN
 Carpet Area - 1030.00 sqft.
 Built up Area- 1163.00 sqft.
 Super Built up Area.-1500.00 sqft.



TYPICAL FLOOR PLAN





Kids Play Swings



Fresh & Healthy Atmosphere



Jogging Track



CC TV Cameras

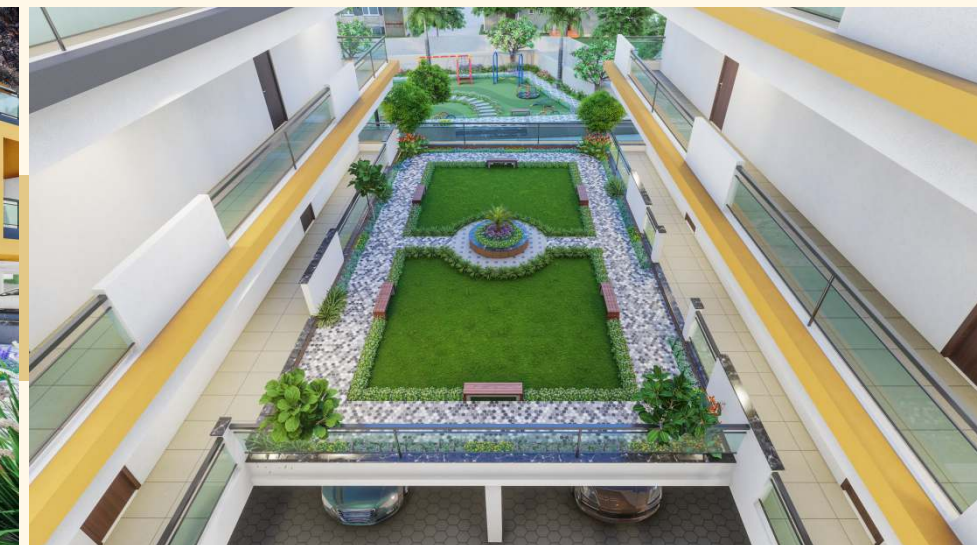


24x7 security

Laxmi
Heights
 3BHK LUXURIOUS APARTMENTS
 AT PRAGATI NAGAR

Amenities that add an
 extra comfort to your life...

- Podium garden
- Children play area
- Jogging track
- Service lift
- Sufficient parking space
- Car wash area
- Adequate water supply
- CCTV cameras for complete security
- Secured Campus with security
- Power back-up for common areas
- Rain water harvesting
- Cement concrete/ paved internal roads
- Fire fighting system



SPECIFICATIONS

STRUCTURE:
 R.C.C. frame Structure.

FLOORING:
 Vitrified tiles flooring.

TOILETS:
 Hot & Cold lines, sanitary ware of reputed make, chrome plated taps, glazed tiles Dado upto 7 ft. height.

KITCHEN:
 Platform with granite & dado upto 4ft. height.

DOORS:
 With cement concrete frame flush type designer shutter doors.

WINDOWS:
 Anodized/powder coated glazed aluminium three track windows. (Sliding Type)

ELECTRIFICATION:
 Concealed Wiring with modular switches & sockets for television

PAINTS:
 Exterior walls- good quality cement paint,
 Interior walls- wall careputty and acrylic emulsion of standard make.
 For grills, doors, windows etc. synthetic enamel paint of good quality.

LIFT: Reputed make elevators.

